



KG3 SERIES BULKHEAD FITTING GLAND

- *High levels of EMC performance*
- *Overall screening is by braid trap system*
- *Lightweight and compact in aluminium - suitable for all panel applications*
- *Sealing by o-ring seal and heat shrink boot*

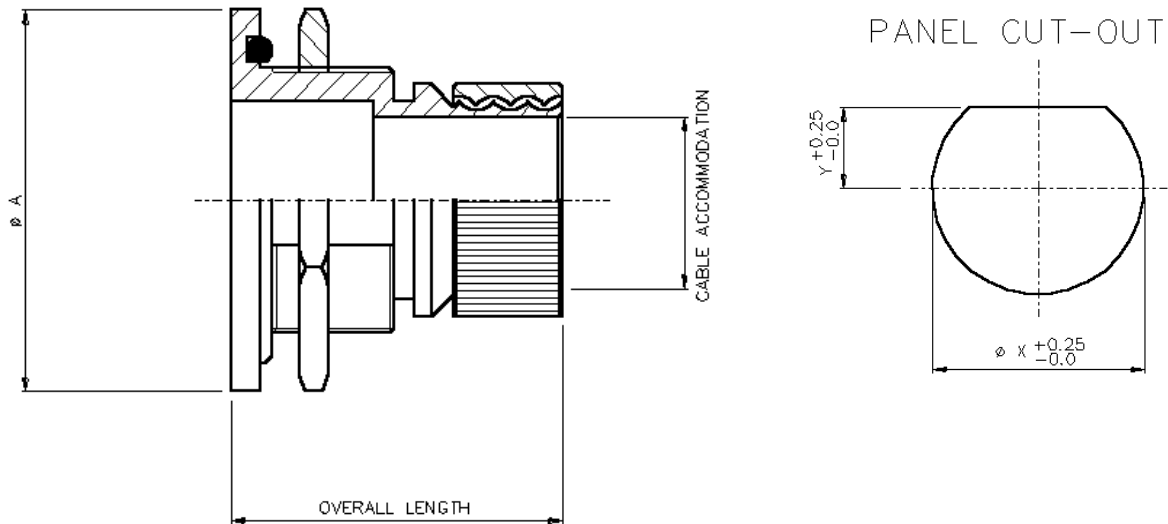
The **KG3** series is part of the **KG** range of high performance, bulkhead glands. A variety of techniques are used to provide electromagnetic compatibility, including TEMPEST level performance, for both individual and overall screening and environmental protection.

Suitable for both highly sophisticated and simpler solutions, the KG range is available at prices that are viable for small batch to high volume production runs. The range is ideal for all defence and aerospace as well as commercial and industrial applications.

KEC Limited is an EMC interconnect specialist that manufactures a wide selection of backshells, bulkhead/panel glands, conduit and conduit fittings and system harnesses.

KEC products are designed to suit all levels of screening requirements for EMI/RFI, EMP, TEMPEST and environmental protection and are designed to help manufacturers comply with UK and EC screening directives.

KG3 BULKHEAD GLAND



TYPICAL PART NUMBER

KG301-08JN-XXX

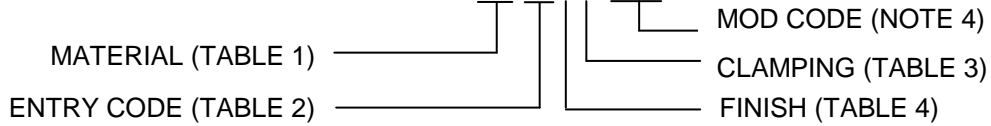


TABLE 1

| MATERIAL CODE | |
|---------------|-----------------|
| 01 | ALUMINIUM |
| 02 | STAINLESS STEEL |
| 03 | ALI BRONZE |

TABLE 3

| CODE | DESCRIPTION |
|------|-------------|
| C | CLAMP BARS |
| T | TIE POST |
| N | PLAIN NUT |

TABLE 4

| CODE | DESCRIPTION |
|------|--------------------------|
| J | ELECTROLESS NICKEL |
| W | CADMIUM + OLIVE DRAB |
| Z | ZINC COBALT + OLIVE DRAB |

TABLE 2

| ENTRY CODE | MAX CABLE ACCOMMODATION | $\varnothing A$ | PANEL CUT-OUT DIMENSIONS | | OVERALL LENGTH |
|------------|-------------------------|-----------------|--------------------------|------|----------------|
| | | | X | Y | |
| 08 | 6.5 | 28.5 | 16.1 | 7.4 | 37.5 |
| 10 | 9.3 | 31.8 | 19.3 | 8.9 | |
| 12 | 12.7 | 34.8 | 22.5 | 10.5 | |
| 14 | 14.4 | 38.1 | 25.6 | 12.0 | |
| 16 | 17.8 | 41.2 | 28.8 | 13.6 | |
| 18 | 19.6 | 44.5 | 32.0 | 15.5 | |
| 20 | 24.1 | 47.5 | 35.2 | 16.9 | |
| 22 | 27.0 | 50.8 | 38.4 | 18.5 | |
| 24 | 29.2 | 53.8 | 41.5 | 20.0 | |

NOTES:

1. THE ABOVE INFORMATION IS TYPICAL AND MANY OTHER OPTIONS & VARIATIONS ARE AVAILABLE, PLEASE CONSULT FACTORY.
2. THE OVERALL LENGTH STATED IS BASED ON A GLAND USING A PLAIN NUT AND DOES NOT INCLUDE THE ADDITIONAL HEIGHT INCURRED WHEN USING CLAMP BARS OR TIE POST.
3. APPLICABLE PANEL THICKNESS RANGE 1.40 - 9.50mm.
4. CONSULT FACTORY IF REQUIRED.

KEC LIMITED

Orpheus House, Calvea Park, Aldermaston, Reading, Berkshire RG7 8TA England
 Tel: +44 (0)118 981 1571 Fax: +44 (0)118 981 1570 email: sales@kec.co.uk www.kec.co.uk