



## KG2 SERIES BULKHEAD FITTING GLAND

- *Excellent EMC performance including TEMPEST levels*
- *Proven IRIS spring technology for overall screening*
- *Individual screening with tube and braid kit*
- *Lightweight aluminium as standard form - suitable for all panel and bulkhead applications*
- *Environmental sealing with integral o-ring seals*

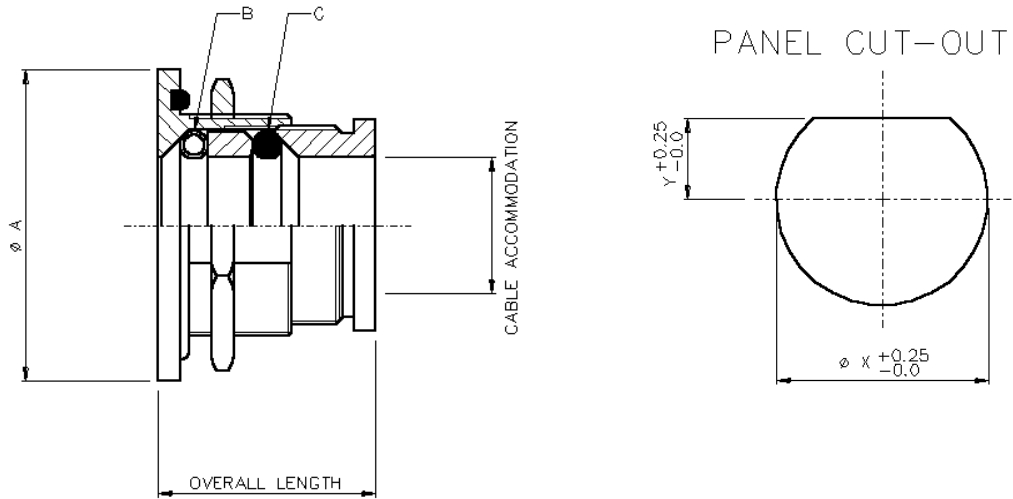
The **KG2** series is part of the **KG** range of high performance, bulkhead glands. A variety of techniques are used in the range to provide electromagnetic compatibility, including TEMPEST level performance for both individual and overall screening and environmental protection.

Suitable for both highly sophisticated and simpler solutions, the KG range is available at prices that are viable for small batch to high volume production runs. The range is ideal for all defence and aerospace as well as commercial and industrial applications.

**KEC Limited** is an EMC interconnect specialist that manufactures a wide selection of backshells, bulkhead/panel glands, conduit and conduit fittings and system harnesses.

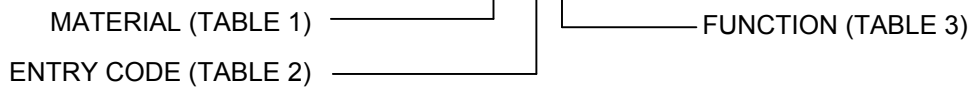
KEC products are designed to suit all levels of screening requirements for EMI/RFI, EMP, TEMPEST and environmental protection and are designed to help manufacturers comply with UK and EC screening directives.

## KG2 BULKHEAD GLAND



### TYPICAL PART NUMBER

**KG201-03D**



**TABLE 1**

MATERIAL CODE	
01	ALUMINIUM
02	STAINLESS STEEL
03	ALI BRONZE

**TABLE 2**

ENTRY CODE	CABLE ACCOMMODATION		PANEL CUT-OUT DIMENSIONS		Ø A	OVERALL LENGTH	
	MIN	MAX	X	Y		MIN	MAX
01	1.6	3.2	16.1	7.4	28.5	22.5	30.0
02	3.2	6.4	19.3	8.9	31.8		
03	4.0	9.5	22.5	10.5	34.8		
04	7.2	12.7	25.6	12.0	38.1		
05	10.3	15.9	28.8	13.6	41.2		
06	13.5	19.1	32.0	15.3	44.5		
07	16.7	22.2	35.2	16.9	47.5		
08	19.9	25.4	38.4	18.5	50.8		
09	23.0	28.6	41.5	20.0	53.8		

**TABLE 3**

CODE	DESCRIPTION	POSITION	
		B	C
D	EMI/RFI & ENVIRONMENTAL	IRIS	SEAL
E	ENVIRONMENTAL & EMI/RFI	SEAL	IRIS
F	EMP & TEMPEST	IRIS	IRIS
G	HIGH PRESSURE SEAL	SEAL	SEAL

**TABLE 4**

CODE	FINISH
W	CADMIUM + OLIVE DRAB
Z	ZINC COBALT + OLIVE DRAB

**NOTES:**

- STANDARD FINISH IS ELECTROLESS NICKEL. TABLE 4 SHOWS OTHER FINISHES. PLEASE CONSULT FACTORY FOR PART NUMBER.
- THE ABOVE INFORMATION IS TYPICAL AND MANY OTHER OPTIONS & VARIATIONS ARE AVAILABLE, PLEASE CONSULT FACTORY.
- APPLICABLE PANEL THICKNESS RANGE 1.4 - 9.50mm.

07/08

**KEC LIMITED**

Orpheus House, Calleva Park, Aldermaston, Reading, Berkshire RG7 8TA England  
 Tel: +44 (0)118 981 1571 Fax: +44 (0)118 981 1570 email: sales@kec.co.uk www.kec.co.uk