



## KD1 BACKSHELL

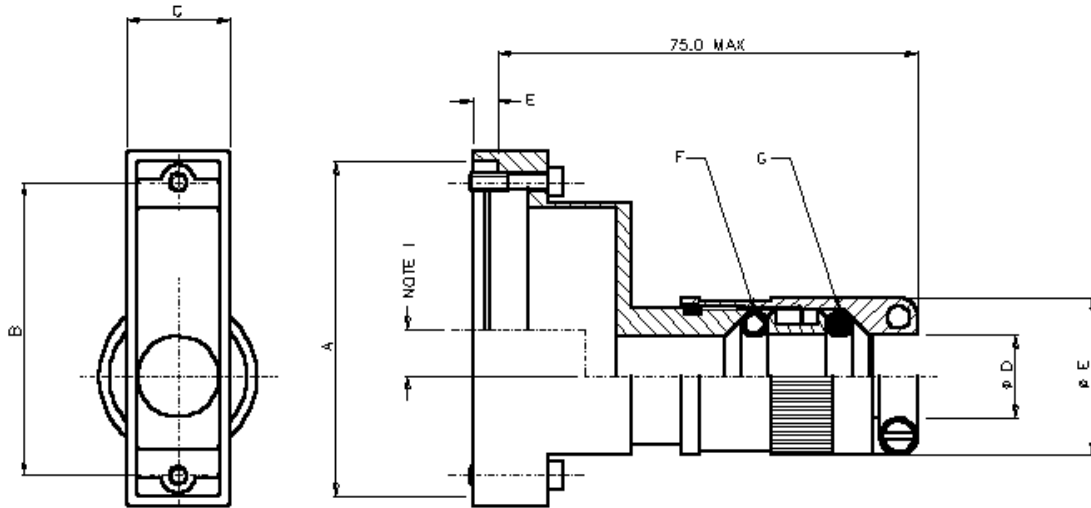
The KD1 is a top performance EMC backshell for D-type connectors. It is machined, in a single piece, from quality aluminium alloy. It completely covers the connector, interfacing with the panel or bulkhead to close all possible leakage paths. KEC's well proven IRIS spring techniques are used to provide the high levels of screening onto the cable and o-ring seals can be incorporated to obtain an environmental seal.

The KD1 is a well proven system having previously been used in defence and aerospace as well as high requirement commercial applications.

**KEC Limited** is an EMC interconnect specialist that manufactures a wide selection of backshells, bulkhead/panel glands, conduit and conduit fittings and system harnesses.

KEC products are designed to suit all levels of screening requirements for EMI/RFI, EMP, TEMPEST and environmental protection and are designed to help manufacturers comply with UK and EC screening directives.

KD1



**TYPICAL PART NUMBER**

**KD1-09CD1-01J**

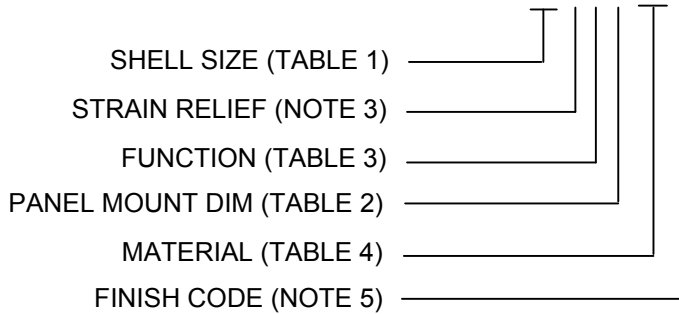


TABLE 3

CODE	DESCRIPTION	
	F	G
D	IRIS	SEAL
F	IRIS	IRIS
J	IRIS	-

TABLE 4

MATERIAL CODE	
01	ALUMINIUM
02	STAINLESS STEEL

TABLE 1

SHELL SIZE	A ± 0.4	B	C	D CABLE RANGE	Ø E
09	31.52	25.0	16.25	3.2 - 6.35	19.05
15	39.85	33.3	16.25	4.0 - 9.5	22.22
25	53.74	47.0	16.25	7.2 - 12.7	25.4
37	70.02	63.5	16.25	7.2 - 12.7	25.4
50	67.38	61.1	19.05	10.3 - 15.8	28.57

TABLE 2

DASH No.	PANEL THICKNESS	E
1	FRONT MOUNT	7.75
2	0.80	6.30
3	1.60 REAR MOUNT	5.50
4	2.30 REAR MOUNT	4.75
5	3.20 REAR MOUNT	3.90
6	FLOAT MOUNTED, CABLE TO CABLE	3.55

TABLE 5

CODE	DESCRIPTION
J	ELECTROLESS NICKEL
W	CADMIUM + OLIVE DRAB PASSIVATE
Z	ZINC COBALT + OLIVE DRAB PASSIVATE

NOTES:

1. SIZE 09 AND 15 OUTLETS ARE ON THE CENTRE LINE. SIZES 25, 37 AND 50 ARE OFF SET BY 7.6mm.
2. SINGLE AND DUAL FUNCTION CABLE ENTRY AVAILABLE. DUAL FUNCTION SHOWN.
3. FOR STRAIN RELIEF OPTIONS USE "C" FOR CABLE CLAMPS OR "N" WITHOUT CABLE CLAMPS.
4. SCREWS ARE RETAINED.
5. CONNECTOR IS RETAINED WITH A SPRING CLIP.

07/08

**KEC LIMITED**

Orpheus House, Calleva Park, Aldermaston, Reading, Berkshire RG7 8TA England  
 Tel: +44 (0)118 981 1571 Fax: +44 (0)118 981 1570 email: sales@kec.co.uk www.kec.co.uk